

# Product Information Update

**Subject:** Cell Grilles

**Date:** September 1999

**Applicability:** PI/1/1.4/B/1

**Ref:** PIU 1/1/368

With immediate effect the rear duct dimension on the range of cell grilles has been changed as shown on the attached data sheets:-

TCG1 data Issue 1

September 1999

TCG2 Data Issue 1

September 1999

TCG3 Data Issue 1

September 1999



C A Palfrey  
**Associate Technical Director**

Trox (UK) Limited

GB-Thetford Norfolk IP24 3SQ  
 Telephone 01842/754545  
 Telefax: 01842/763051

# TROX<sup>®</sup> TECHNIK

Product Information  
 TCG1-/-/- HIGH SECURITY  
 CELL GRILLE

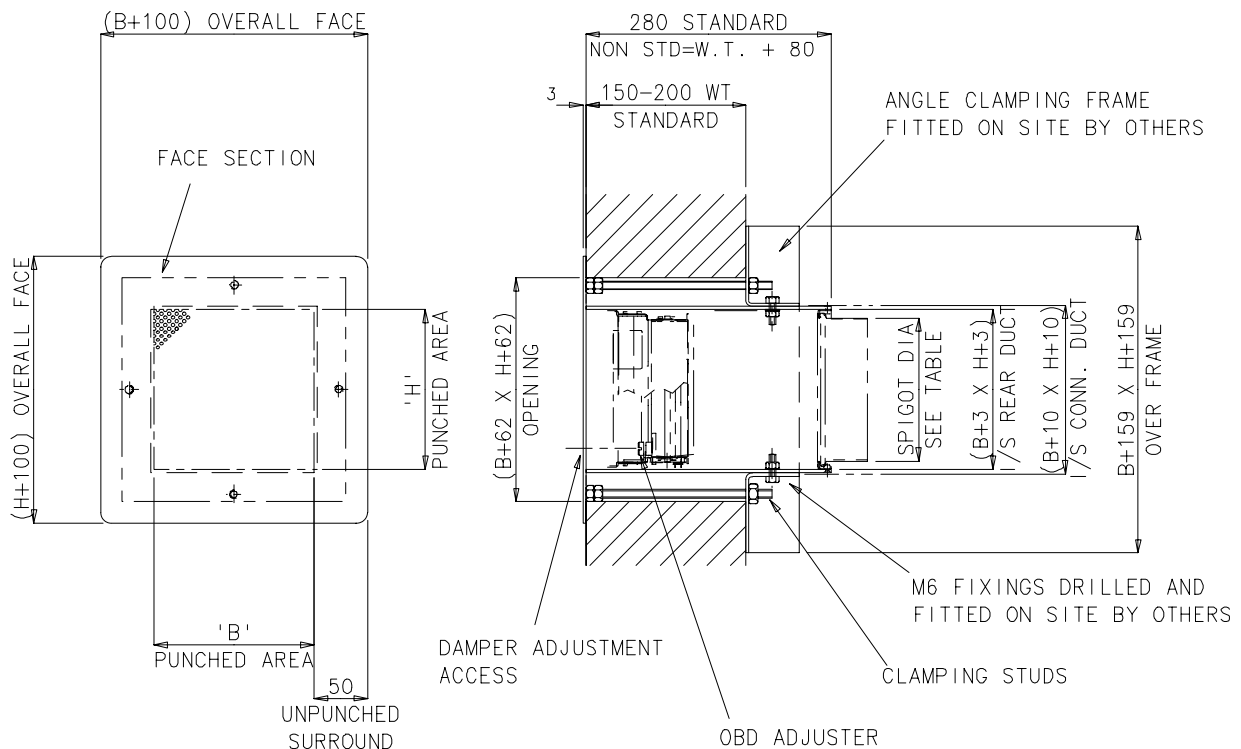

**GENERAL NOTES:**

MATERIAL:-  
 FACEPLATE- PERFORATED STEEL 3mm THICK  
 WHEN REQUIRED:-  
 SPIGOT AND END TRAY WHEN SPECIFIED-PRE-GALVANISED  
 STEEL SHEET N.B. REFER TO TABLE FOR SPIGOT SIZES  
 OPPOSED BLADE DAMPER - STANDARD TROX AG TYPE  
 OTHER ACCESSORIES E.G. INTUMESCENT FIRE BLOCK  
 AVAILABLE ON REQUEST.  
 STANDARD FINISH: POWDERCOAT RAL 9010-20% GLOSS  
 STANDARD TYPES :  
 TCG1-A = FACE AND REAR DUCT  
 TCG1-AG = FACE,REAR DUCT WITH OPPOSED BLADE DAMPER  
 TCG1-AGC = FACE,REAR DUCT WITH O.B.D. AND REAR SPIGOT CONNECTION.

STANDARD SIZES B X H
150 X 150
200 X 150
250 X 150
200 X 200
250 X 200
250 X 250
OTHER SIZES AVAILABLE ON REQUEST.

SIZE	SPIGOT
150 X 150	123 DIA
200 X 150	123 DIA
250 X 150	123 DIA
200 X 200	158 DIA
250 X 200	158 DIA
250 X 250	198 DIA
OTHER SIZES AVAILABLE ON REQUEST.	

TYPICAL ORDER DEFINITION :-  
 TCG1-A/150 X 150/0/0/P3/RAL9010/20%



HIGH SECURITY GRILLE - TCG1-/-/-

All rights reserved © Trox (UK) Limited. Design changes reserved.



Trox (UK) Limited

GB-Thetford Norfolk IP24 3SQ  
Telephone 01842/754545  
Telefax: 01842/763051

# TROX<sup>®</sup> TECHNIK

Product Information  
TCG3-/-/- LOW SECURITY  
CELL GRILLE


**GENERAL NOTES:**

MATERIAL:-  
FACEPLATE- PERFORATED STEEL 3mm THICK  
WHEN REQUIRED:-  
REAR DUCT PRE-GALVANISED STEEL SHEET  
OPPOSED BLADE DAMPER - STANDARD TROX AG TYPE

STANDARD FINISH: POWDERCOAT RAL 9010-20% GLOSS  
TCG3-A = FACE AND REAR DUCT  
TCG3-AG = FACE REAR DUCT AND OPPOSED BLADE DAMPER

**STANDARD SIZES B X H**

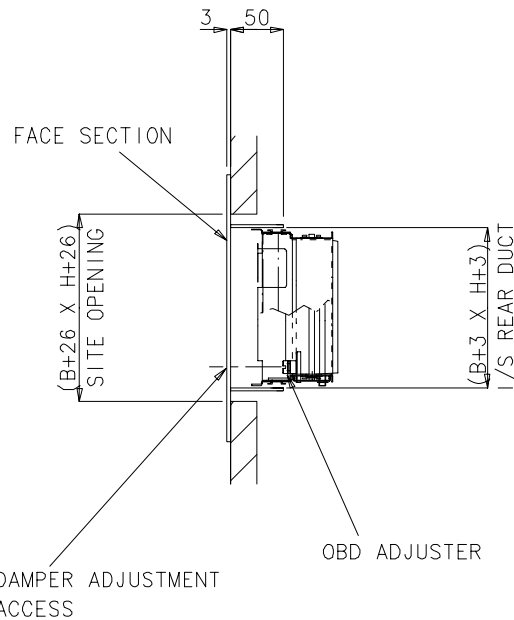
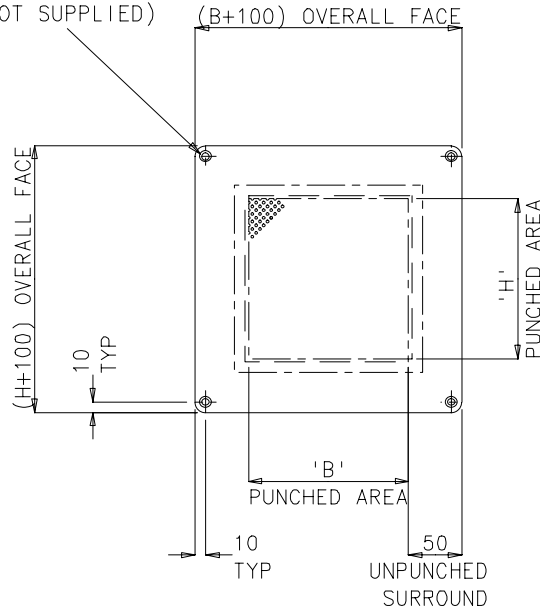
150 X 150
200 X 150
250 X 150
200 X 200
250 X 200
250 X 250
OTHER SIZES AVAILABLE ON REQUEST.

**SIZE SPIGOT**

150 X 150	123 DIA
200 X 150	123 DIA
250 X 150	123 DIA
200 X 200	158 DIA
250 X 200	158 DIA
250 X 250	198 DIA
OTHER SIZES AVAILABLE ON REQUEST.	

TYPICAL ORDER DEFINITION :-  
TCG3-AG/150 X 150/0/0/P3/RAL9010/20%

M6 SECURITY SCREWS  
(NOT SUPPLIED)



NOTE:  
ON TCG-3 SITE FIXING  
USING 'KEMFIX' OR SIMILAR BY  
OTHERS

LOW SECURITY GRILLE - TCG3-/-/-

All rights reserved © Trox (UK) Limited. Design changes reserved.

# Product Information Update

**Subject:** Cell Grilles Type TCG

**Date:** April 2007

**Applicability:** Leaflet PI/1/1.4/B/1

**Ref:** PIU 1/1/538

PIU Issued: YES

NO

From Week 20/07, the faceplate of the TCG Cell Grille will be perforated with 3mm diameter holes on 5mm staggered pitch. This will decrease the free area to 32.6% and change the published performance data as follows: for a given face velocity, size and air volume in the selection charts; increase throw by 15% (supply only). Increase pressure drop by 50% (supply and extract). The price remains as the current price list.

The details of the perforation used on the TCG should be stated on all quotations.

Project specifications should be checked for the requirement of a smaller hole size (eg 2mm dia.), in which case the TCG does not comply.

C A Palfrey



**Associate Technical Director**

**NEW TCG EXTRACT DATA.**

BASIS

SIZE	%FA	FACEM/S	0.5	0.75	1	1.25	1.5	1.75	2	2.25	2.5
150X150	32	L/S	11	17	23	28	34	39	45	51	56
150X150	32	DBA			15	21	26	30	33	37	39
150X150	32	PA	2	5	8	13	18	25	32	41	50
200X150	32	L/S	15	23	30	38	45	53	60	68	75
200X150	32	DBA			16	22	27	31	34	38	40
200X150	32	PA	2	5	8	13	18	25	32	41	50
250X150	32	L/S	19	28	38	47	56	66	75	84	94
250X150	32	DBA			17	23	28	32	35	39	41
250X150	32	PA	2	5	8	13	18	25	32	41	50
200X200	32	L/S	20	30	40	50	60	70	80	90	100
200X200	32	DBA			18	24	29	33	36	40	42
200X200	32	PA	2	5	8	13	18	25	32	41	50
250X200	32	L/S	25	38	50	63	75	88	100	113	125
250X200	32	DBA			19	25	30	34	37	41	43
250X200	32	PA	2	5	8	13	18	25	32	41	50
250X250	32	L/S	31	47	63	78	94	109	125	141	156
250X250	32	DBA			20	26	31	35	38	42	44
250X250	32	PA	2	5	8	13	18	25	32	41	50
300X300	32	L/S	45	68	90	113	135	158	180	203	225
300X300	32	DBA		14	21	27	32	36	39	43	45
300X300	32	PA	2	5	8	13	18	25	32	41	50

L/S=AIR FLOW  
 PA=STATIC PRESSURE DROP

DBA=SOUND POWER LEVEL

A

**NEW TCG SUPPLY DATA**

BASIS

SIZE	%FA	FACEM/S	0.5	0.75	1	1.25	1.5	1.75	2	2.25	2.5
150X150	32	L/S	11	17	23	28	34	39	45	51	56
150X150	32	M	1.3	1.9	2.5	3.2	3.8	4.4	5.1	5.7	6.3
150X150	32	DBA			21	27	32	36	39	43	45
150X150	32	PA	1	3	5	8	12	16	21	27	33
200X150	32	L/S	15	23	30	38	45	53	60	68	75
200X150	32	M	1.5	2.3	3.0	3.8	4.5	5.3	6.0	6.8	7.5
200X150	32	DBA			22	28	33	37	40	44	46
200X150	32	PA	1	3	5	8	12	16	21	27	33
250X150	32	L/S	19	28	38	47	56	66	75	84	94
250X150	32	M	1.7	2.5	3.3	4.2	5	5.8	6.7	7.5	8.3
250X150	32	DBA			23	29	34	38	41	45	47
250X150	32	PA	1	3	5	8	12	16	21	27	33
200X200	32	L/S	20	30	40	50	60	70	80	90	100
200X200	32	M	1.7	2.6	3.5	4.3	5.2	6.1	6.9	7.8	8.7
200X200	32	DBA			24	30	35	39	42	46	48
200X200	32	PA	1	3	5	8	12	16	21	27	33
250X200	32	L/S	25	38	50	63	75	88	100	113	125
250X200	32	M	1.9	2.9	3.9	4.8	5.8	6.8	7.7	8.7	9.7
250X200	32	DBA			25	31	36	40	43	47	49
250X200	32	PA	1	3	5	8	12	16	21	27	33
250X250	32	L/S	31	47	63	78	94	109	125	141	156
250X250	32	M	2.1	3.2	4.3	5.3	6.4	7.5	8.5	9.6	10.7
250X250	32	DBA			26	32	37	41	44	48	50
250X250	32	PA	1	3	5	8	12	16	21	27	33
300X300	32	L/S	45	68	90	113	135	158	180	203	225
300X300	32	M	2.5	3.8	5.1	6.3	7.6	8.9	10.1	11.4	12.7
300X300	32	DBA		20	27	33	38	42	46	49	51
300X300	32	PA	1	3	5	8	12	16	21	27	33

L/S=AIR FLOW

M=THROW TO 0.5M/S AVERAGE

PA=STATIC PRESSURE DROP

DBA=SOUND POWER LEVEL